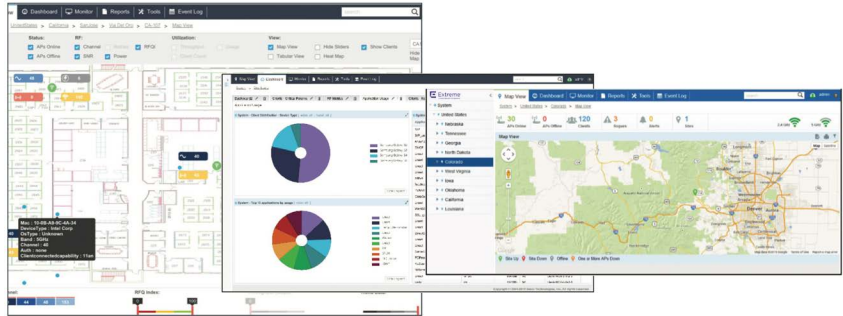


Extreme NSight™ Platform

Advanced Network Visibility, Service Assurance, and Analytics Platform for ExtremeWireless WiNG 5.8+ Wireless LANs

PLATFORM FEATURES

- Visualizing network statistics and events — simplified and unified network views based on user's role
- Custom live updating dashboards for every role
- Wellness of WLAN services, based on identified SLA baseline levels
- Automation of proactive and reactive network problem remediation
- Live troubleshooting tools — packet capture, wireless debug logs, TCP/IP ping and traceroute
- Identify persistent faults in the network using configurable alarm thresholds for immediate remediation
- Interactive floor maps with timeline view to visualize and identify issues and problem areas
- Real-time and historic trend analysis to simplify network growth planning
- Exceptionally responsive interface — virtually any information is just a few clicks away
- Powered by cloud technologies — built to scale
- Faster resolution for service desk responses
- Minimize escalations to network engineers
- Easy-to-use interface — practically no training required
- Improves efficiency for network engineers and reduces site visits through remote diagnostic tools
- Improve network security through rogue monitoring and PCI reporting
- Improve planning to meet performance and capacity requirements through historical trends and reports



Product Overview

The wireless LAN has become a crucial key to business success, providing the real-time data that streamlines everyday business processes, improves customer service, and reduces the opportunity for errors that can result in reduced profitability, lost sales, and lost customers. In order to achieve the level of reliability you require, you need to understand the state of health of your network at all times. You need the right information to troubleshoot and resolve issues. And you need information to properly budget and plan for network expansion as needed to maintain peak wireless performance as you add users and applications. The Extreme NSight platform delivers it all. NSight provides the real-time insight into your WLAN operations you need to protect this vital business artery and the business critical data it carries, every day of the year. This flexible management software allows you to access the wealth of information collected by the ExtremeWireless WiNG operating system and view it in an easy-to-use browser interface, either in real time or over a time period of your choosing for easy trend analysis. Get more value out of your WLAN management data with the Extreme NSight platform, only from Extreme Networks.

CUSTOM DASHBOARDS PROVIDE THE RIGHT SET OF INFORMATION FOR ANYONE IN YOUR ORGANIZATION

Different roles in the organization need different types of information about the WLAN. Now, you can create a custom dashboard to put that information at their fingertips, anywhere and anytime. You can give help desk teams access to operational analytics to assist in day-to-day network troubleshooting and issue resolution. You can provide a CIO with a real-time window into trending data for a three month period to assist in WLAN planning and budgeting. And no matter how complex the information may be, the Extreme NSight platform visualizations make it easy to read and easy to digest.

FLEXIBLE REPORTS

With our pre-defined system reports, you can view crucial WLAN information as soon as you install the software. You can customize these reports to suit the needs of various users (what data is presented, when the report should be run — such as every Monday, monthly, or on demand — and how to deliver the report). Pre-defined reports include RF Health, which helps instantly identify areas of your WLAN that may be underperforming and may require tuning; PCI, which creates a complete audit of conformance to PCI requirements; Device Type/Firmware; Device Summary; Client Inventory; and Network Usage.

POWERFUL INTERACTIVE MAPS FOR EASY NETWORK VISUALIZATION AND MANAGEMENT

You can see all your sites in Google Maps, with quick links to snapshots of key metrics. With another click, you can view a site floor map to see all the access points in a specific location, and drill down to view the details of a specific access point. For example, you can select the Channel from the RF attributes to instantly see if channels are optimally distributed and if there are any interference issues.

Key Extreme NSight Platform Capabilities

WI-FI ANALYTICS

The Extreme NSight platform brings a new level of breadth and depth to WLAN analytics by allowing you to easily leverage the massive amounts of data that Extreme's WLAN infrastructure collects at very granular time intervals — such as device health, bandwidth usage, application usage, and performance metrics. Now, it's easy to monitor and analyze the most complex wireless scenarios, as well as compare current and historical usage and performance patterns to uncover trends and plan for future expansion of your WLAN.

NETWORK VISIBILITY

The Extreme NSight platform provides the network visibility you seek with just a few clicks, creating an unparalleled responsive user interface that allows instant visualization of your network at every level — from the site level to a specific access point or client device. Within seconds, you can view site-wide data, such as the number of users, network usage, throughput, and application usage. With a click, you can drill down to view a wide variety of metrics for a specific access point to help diagnose and resolve an issue, such as RF parameters, channel utilization, error rates, and retry rates.

APPLICATION VISIBILITY

The Deep Packet Inspection (DPI) engine embedded in our WiNG OS examines every flow of every user at the access point, detecting and identifying thousands of applications in real time and reporting the information to the Extreme NSight platform. The result is real-time visibility and in-depth insight into every dimension of the network, including Layer-7 application visibility, client devices, device and OS type, and users. At a glance, you can see the top applications by usage or by count at every level — from site to access points and client devices. In addition, your firewall and QoS policies can leverage the application context to enforce policies. With this intelligence, you can improve the overall performance of the WLAN network and protect workforce productivity by prioritizing business critical applications and blocking others based on the IT policy.

REPORTING AND TROUBLESHOOTING

The Extreme NSight platform's unique interactive graphical interface makes it easier than ever to access the exact data needed for faster troubleshooting and issue resolution. The comprehensive feature set allows you to easily access and view all the layers of needed information in a single pane of glass. You no longer need to log in and out of individual access points. Instead, you can create a custom dashboard on the fly to collect and view the metrics you want from access points and their client devices, over any period of time — all with just a few clicks. While viewing the access point or client details page, you can launch the Extreme NSight platform's event log browser and apply filters to see the recent events related to a specific access point or client device. The result? The ability to drill down to the specific detailed information you need to address network issues and restore performance levels in record time.

The Extreme NSight platform browser-based interface makes it easy to access the platform's complete set of powerful troubleshooting tools, including:

- **Packet Capture.** This feature-rich tool allows you to select what you want to capture, including wireless and wired network traffic, your desired filters, and whether to display the results or store results in a file that can be shared with peers or the escalation support team.
- **AP Test.** AP Test is part of the network assurance tools; allows end-to-end network connectivity testing for WLAN deployment.
- Performs on-demand or automated network tests and verifies access to various network services for proactive network issue isolation/remediation.

- **Alarm Management.** Troubleshooting and fault management through alarms to detect system function anomalies and isolate issues. Built for large distributed WLAN deployments.
 - Alarm configuration via NSight Dashboard for trigger interval, threshold, and severity
 - Configuration notifications – Syslog, SMS, and SMTP
 - Summary view on active and historical alarm data
- **Wireless Debug Log Access.** Easily obtain detailed information that can reveal 802.11 protocol-level errors that may be occurring, yet not reported at other levels in the debug log.
- **Event Log Browser.** Access the event log through the Extreme NSight platform's browser-based interface to view events over a time period you select for a specific access point or mobile client device.

Extreme NSight Platform – the easy way to keep your wireless LAN up and running at peak performance.

For more information, visit www.extremenetworks.com/extremensight or access our global contact directory at www.extremenetworks.com/contact.

Supported Appliance Platforms

Extreme NSight is supported on the NX 95XX, NX96XX, and VX 9000 platforms in both stand-alone server and integrated WiNG+NSight modes

CONTROLLER PLATFORM	NUMBER OF ACCESS POINTS (MAX 1,000 RF DOMAINS)	STATS UPDATE INTERVAL	AVC UPDATE INTERVAL	WIRELESS CLIENT UPDATE INTERVAL
NX 95X0 / NX96XX	2,500	1 Min	5 Min	5 Min
NX 95X0 / NX96XX	5,000	2 Min	5 Min	5 Min
NX 95X0 / NX96XX	10,000	5 Min	5 Min	5 Min

Scaling – NSight on Virtualized VX9000 Platform

WING + NSIGHT						
# of APs or RF Domains	100	500/100	1000/200	2000/500	5000/1000	10000/500
CPU	8 core @2.5 GHz	12 core @2.5 GHz	18 core @2.7 GHz	24 core @2.7 GHz	24 core @2.7 GHz	24 core @2.7 GHz
Memory (DDR3-L or DDR4)	16 GB	32 GB	40 GB	64 GB	96 GB	128 GB
Storage/Config	500 GB RAID1+0	500 GB RAID1+0	500 GB RAID1+0	500 GB RAID1+0	2 TB RAID1+0 4 x 500 GB SSD (SLC)	5 TB RAID1+0 8 x 500 GB SSD (SLC)
IOPS	2,000 sustained writes	2,000 sustained writes	3,000 sustained writes	4,000 sustained writes	4,000 sustained writes	4,000 sustained writes

NSIGHT STAND-ALONE						
Capacity (APs/RF Domains/Clients)	10,000/1,000/100K	15,000/1,500/150K	20,000/2,000/300K	25,000/2,000/300K	30,000/2,000/300K	40,000/2,000/600K
Memory (DDR3-L or DDR4)	128 GB	128 GB	128 GB	128 GB	256 GB	256 GB
Storage/Config	500 GB RAID1+0	1 TB RAID1+0	2 TB RAID1+0 4x 500GB SSD (SLC)	2 TB RAID1+0 8x 500GB SSD (SLC)	2 TB RAID1+0 8x 500 GB SSD (SLC)	5 TB RAID1+0 8 x 500 GB SSD (SLC)
IOPS	3,000 sustained writes	4,000 sustained writes	4,000 sustained writes	4,000 sustained writes	4,000 sustained writes	8,000 sustained writes

Ordering Extreme NSight

Extreme NSight is licensed per access point, offered as a subscription service or via a perpetual license.

NSIGHT SUBSCRIPTION LICENSES

PART NUMBER	DESCRIPTION
NX-9000-NST-1-64	64 AP 1-YEAR NSIGHT LICENSE FOR NX 9XXX
NX-9000-NST-1-256	256 AP 1-YEAR NSIGHT LICENSE FOR NX 9XXX
NX-9000-NST-1-1024	1024 AP 1-YEAR NSIGHT LICENSE FOR NX 9XXX
NX-9000-NST-3-64	64 AP 3-YEAR NSIGHT LICENSE FOR NX 9XXX
NX-9000-NST-3-256	256 AP 3-YEAR NSIGHT LICENSE FOR NX 9XXX
NX-9000-NST-3-1024	1024 AP 3-YEAR NSIGHT LICENSE FOR NX 9XXX
VX-9000-NST-1-64	64 AP 1-YEAR NSIGHT LICENSE FOR VX 9000
VX-9000-NST-1-256	256 AP 1-YEAR NSIGHT LICENSE FOR VX 9000
VX-9000-NST-1-1024	1024 AP 1-YEAR NSIGHT LICENSE FOR VX 9000
VX-9000-NST-3-64	64 AP 3-YEAR NSIGHT LICENSE FOR VX 9000
VX-9000-NST-3-256	256 AP 3-YEAR NSIGHT LICENSE FOR VX 9000
VX-9000-NST-3-1024	1024 AP 3-YEAR NSIGHT LICENSE FOR VX 9000

NSIGHT PERPETUAL LICENSES

PART NUMBER	DESCRIPTION
VX9-NSIGHT-1	VX-9000 NSight Perpetual License for 1 AP
VX9-NSIGHT-16	VX-9000 NSight Perpetual License for 16 APs
VX9-NSIGHT-64	VX-9000 NSight Perpetual License for 64 APs
VX9-NSIGHT-256	VX-9000 NSight Perpetual License for 256 APs
VX9-NSIGHT-1024	VX-9000 NSight Perpetual License for 1024 APs
VX9-NSIGHT-2048	VX-9000 NSight Perpetual License for 2048 Aps
NX9-NSIGHT-1	NX-9xxx NSight Perpetual License for 1 AP
NX9-NSIGHT-16	NX-9xxx NSight Perpetual License for 16 APs
NX9-NSIGHT-64	NX-9xxx NSight Perpetual License for 64 APs
NX9-NSIGHT-256	NX-9xxx NSight Perpetual License for 256 APs
NX9-NSIGHT-1024	NX-9xxx NSight Perpetual License for 1024 APs
NX9-NSIGHT-2048	NX-9xxx NSight Perpetual License for 2048 APs



<http://www.extremenetworks.com/contact> / Phone +1-408-579-2800

©2017 Extreme Networks, Inc. All rights reserved. Extreme Networks and the Extreme Networks logo are trademarks or registered trademarks of Extreme Networks, Inc. in the United States and/or other countries. All other names are the property of their respective owners. For additional information on Extreme Networks Trademarks please see <http://www.extremenetworks.com/company/legal/trademarks>. Specifications and product availability are subject to change without notice. 11331-0517-01